



Mining is essential for a sustainable world. Smartphones, electric vehicles, wind turbines and other green technologies require metals that need to be mined out of the ground. But mining also accounts for 7% of all greenhouse gas emissions. This is clearly not a sustainable pathway. ABB has an answer. Building on decades of real-world experience electrifying, automating and connecting mine equipment and mine operations, we developed ABB Ability™ eMine. This one system solution will help mines transition from fossil fuel to all-electric, which not only improves the overall safety, efficiency and productivity of the mine. It also greatly improves the world around it. **ABB Ability™ eMine. For your world, and mine.**



Electrifying your mine also } improves the world beyond it.

ABB Ability™ eMine. For your world, and mine.

Did you know that if every truck in every mine were electrified, we could remove 198,000 tons of CO₂ every day from the air we breathe? ABB Ability™ eMine makes the all-electric mine possible. By fully integrating electrification and digital systems from the mine to the port, eMine™ significantly reduces your environmental impact, lowers costs and raises productivity. Together, we can build the mine of tomorrow. A mine that's great for your business. And even better for the world around it.

Let's write the future of mining. Together.
new.abb.com/mining/emine





Electrifying your mine also



improves the world beyond it.



ABB Ability™ eMine. For your world, and mine.

Did you know that every electrified mining truck eliminates enough CO₂ emissions per year to save 3,000 square meters of arctic ice? Imagine the impact of electrifying the entire mine. ABB Ability™ eMine makes that possible. Building on decades of experience and expertise, we fully integrate electrification and digital systems from the mine to the port, reducing your environmental impact, lowering your costs and raising your productivity. Refreshing, isn't it?

Let's write the future of mining. Together.
new.abb.com/mining/emine





Electrifying your mine also



improves the world beyond it.

ABB Ability™ eMine. For your world, and mine.

Electrifying a single mining truck can help save the coral reefs by lowering the oceans' CO₂ absorption by up to 1,000 tons a year. Just imagine electrifying your entire mine. ABB Ability™ eMine makes that goal a reality. Building on decades of experience and expertise, we fully integrate electrification and digital systems from the mine to the port. Which ultimately lowers your environmental impact and operating costs, while raising your productivity. From planning to implementation, you can trust ABB to help change the current. For your mine as well as the world around it.

Let's write the future of mining. Together.
new.abb.com/mining/emine



PRINT ADVERTISING

Electrifying your mine also improves the world beyond it.

ABB Ability™ eMine. For your world, and mine.

Electrifying a single mine truck eliminates the same amount of CO₂ emissions per year that it would take 46,000 trees to absorb. Just imagine if we electrified all 46,000 of them just in surface mining operations. ABB Ability™ eMine makes the all-electric mine possible. By fully integrating electrification and digital systems from the mine to the port, eMine™ will lift your environmental responsibility and your productivity at the same time. ABB has the experience and expertise you can trust to root your mine firmly in sustainability.

Let's write the future of mining. Together.
new.abb.com/mining/emine

Electrifying your mine also improves the world beyond it.

ABB Ability™ eMine. For your world, and mine.

Did you know that if every truck in every mine were electrified, we could remove 198,000 tons of CO₂ every day from the air we breathe? ABB Ability™ eMine makes the all-electric mine possible. By fully integrating electrification and digital systems from the mine to the port, eMine™ significantly reduces your environmental impact, lowers costs and raises productivity. Together, we can build the mine of tomorrow. A mine that's great for your business. And even better for the world around it.

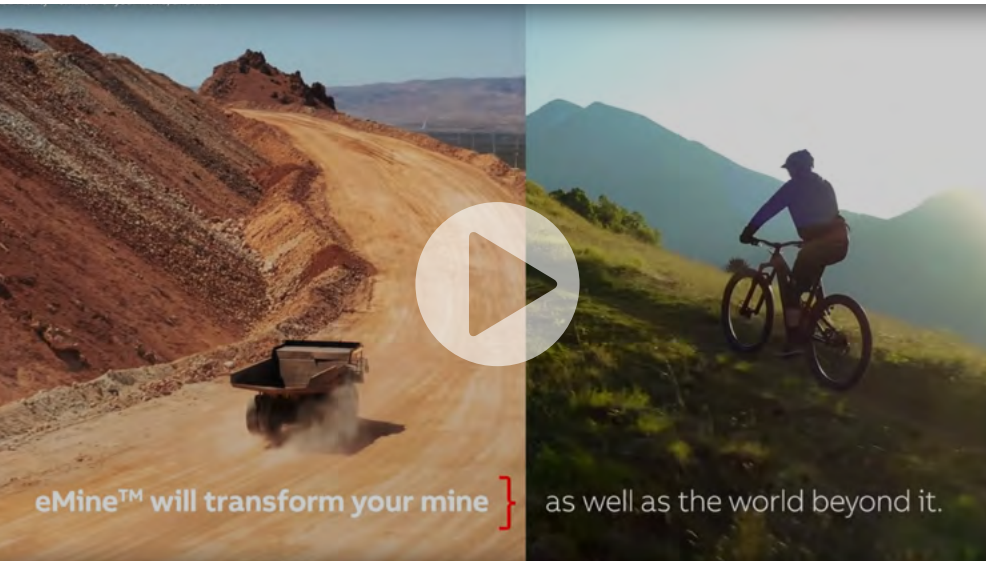
Let's write the future of mining. Together.
new.abb.com/mining/emine

Electrifying your mine also improves the world beyond it.

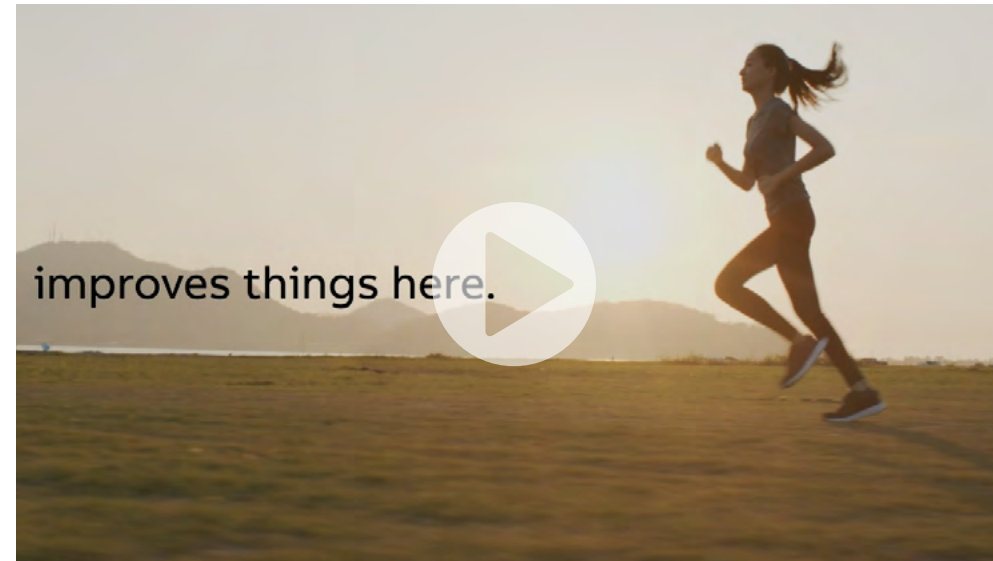
ABB Ability™ eMine. For your world, and mine.

Did you know that every electrified mining truck eliminates enough CO₂ emissions per year to save 3,000 square meters of arctic soil? Imagine the impact of electrifying the entire mine. ABB Ability™ eMine makes that possible. Building on decades of experience and expertise, we fully integrate electrification and digital systems from the mine to the port, reducing your environmental impact, lowering your costs and raising your productivity. Rethinking. Isn't it?

Let's write the future of mining. Together.
new.abb.com/mining/emine



FULL VIDEO



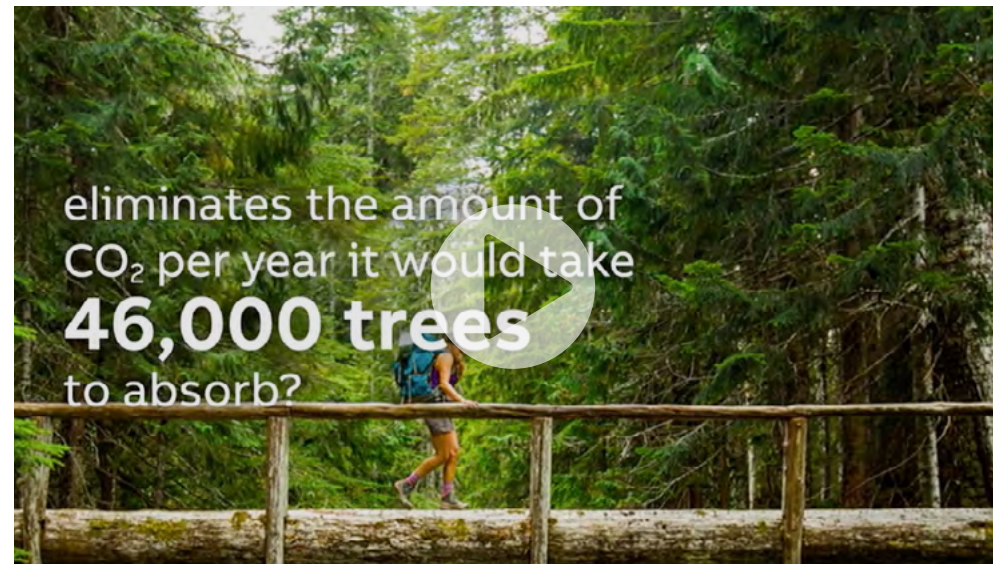
:10 TEASER



eMine™ DYK AIR POST VIDEO



eMine™ DYK OCEAN POST VIDEO



eMine™ DYK TREES POST VIDEO



eMine™ DYK ARCTIC ICE POST VIDEO

Mining is essential for a sustainable world.

Cellphones, electric vehicles, batteries, windfarms... virtually every aspect of modern life relies on the ores mined from the earth.

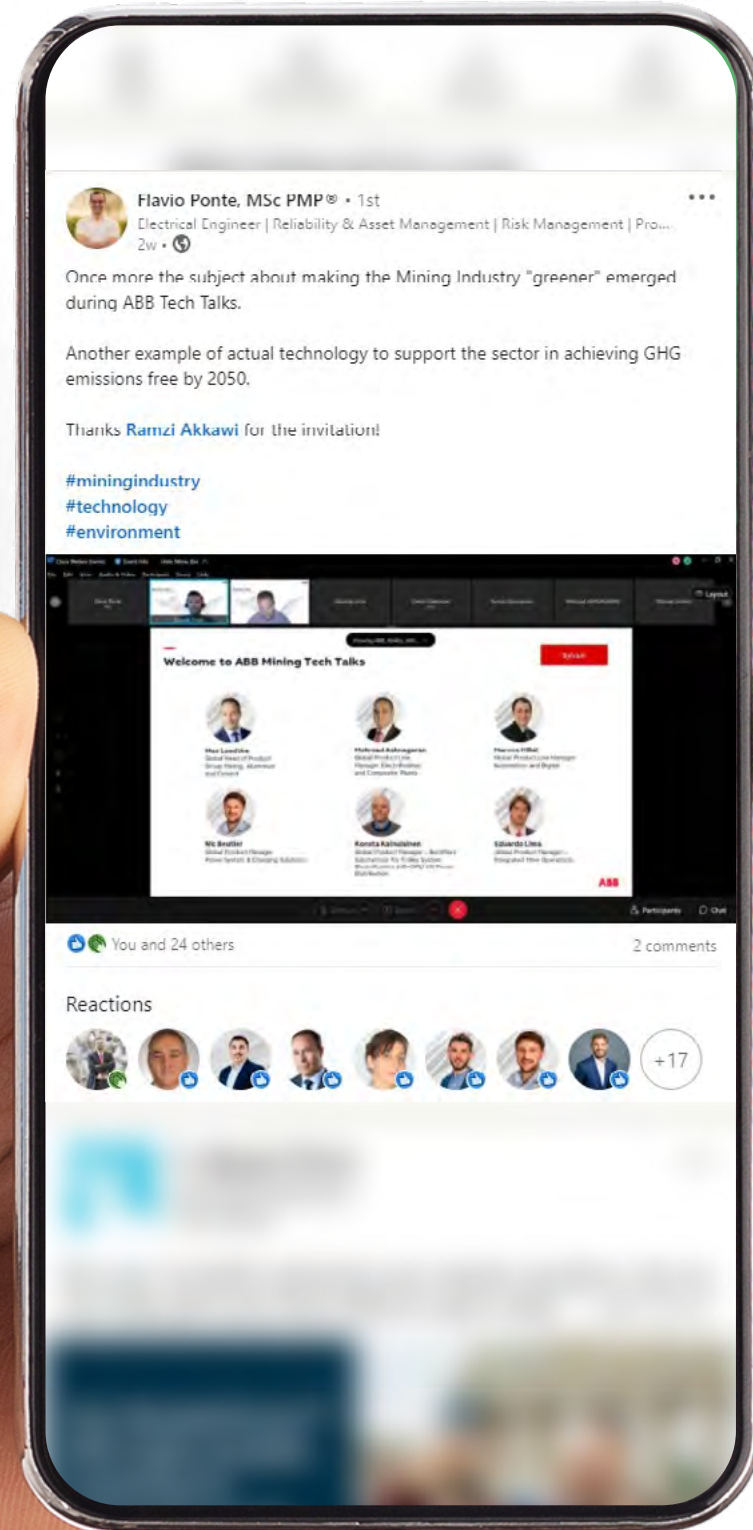
©ABB March 2, 2022 | Slide 2

ABB Ability™ eMine. For your world, and mine.

ABB



Dubai mining show



147
PEOPLE REGISTERED
TO WATCH THE
WEBINAR ON DEMAND

149,229 VIEWS
TOTAL LINKEDIN
IMPRESSIONS ON
ABB PA ACCOUNT

46 LEADS
NON ABB PEOPLE
ATTENDED

11,081 PEOPLE
TOTAL LINKEDIN
ENGAGEMENT ON
ABB PA ACCOUNT

5 HOT LEADS
PARTICIPANTS ASKED
TO BE CONTACTED

INTERACTIVE BROCHURE

ABB

Mine a Better World Design a Better Mine The All-Electric Mine **Get Started with eMine™** For Your World, and Mine.

Introducing ABB Ability™ eMine.

Electrifying your mine, like mining itself, is a process. Based on industry expertise and deep experience, our team understands the challenges facing you as you consider transitioning to all-electric. But understanding is only half the battle. eMine™ makes the all-electric mine possible with a purposeful approach, proven methods and integrated electrification and digital system solutions from mine to port.

- ABB's Broad Portfolio
- Strategic Collaboration
- Consultancy Services & Mine Design
- Tailored and Fit-for-Purpose Solutions
- Lifecycle Services

ABB Ability™ eMine. For your world, and mine.

[VISIT BROCHURE](#)

ABB

Mine a Better World Design a Better Mine The All-Electric Mine **Get Started with eMine™** For Your World, and Mine.

We are committed to a more sustainable future for mining.

At ABB, we care as much about the health, safety and well-being of our environment as we do for the people who inhabit it. To that end, we embed sustainability into everything we do. We are partnering with our customers to reduce their annual CO₂ emissions by 100 megatons by 2030—equivalent to the annual emissions of 30 million combustion cars—and we will achieve carbon neutrality in our own operations by that date.

What does that mean for your mine?

Did you know? Did you know? Did you know? Did you know? Did you know?

ABB

Mine a Better World Design a Better Mine The All-Electric Mine **Get Started with eMine™** For Your World, and Mine.

Interoperability

Energy management

Mobility/flexibility

Connection interface

Favorable process and mine design

We know what it takes to build an all-electric operation.

There are many reasons to transition to an all-electric mine. And just as many elements to consider before you begin the journey. ABB not only understands these requirements, we can also equip you to meet them.

Drivers for the all-electric mine

ABB

Mine a Better World Design a Better Mine The All-Electric Mine **Get Started with eMine™** For Your World, and Mine.

Solutions made for the unique challenges of today's mines.

Building on decades of mining project electrification experience and expertise, and over 10 years' experience in providing charging infrastructure for buses, trucks and cars, we are able to offer solutions that are uniquely designed to handle the requirements of the mining industry based on latest technologies. And by integrating these solutions with automation and digital systems, we are set up to plan, monitor and control processes, optimizing operators and energy usage from grid to wheel.

ABB's Broad Portfolio Strategic Collaboration Consultancy Services & Mine Design Tailored and Fit-for-Purpose Solutions Lifecycle Services

ABB

Mine a Better World Design a Better Mine The All-Electric Mine **Get Started with eMine™** For Your World, and Mine.

Electrification challenges, meet ABB Ability™ digital solutions.

Through the ABB Ability™ MineOptimize portfolio, we are able to bring together electrification, automation and digital technology like no other company. By digitally connecting all of our solutions, they can be monitored and controlled to optimize operations and energy usage in real time.

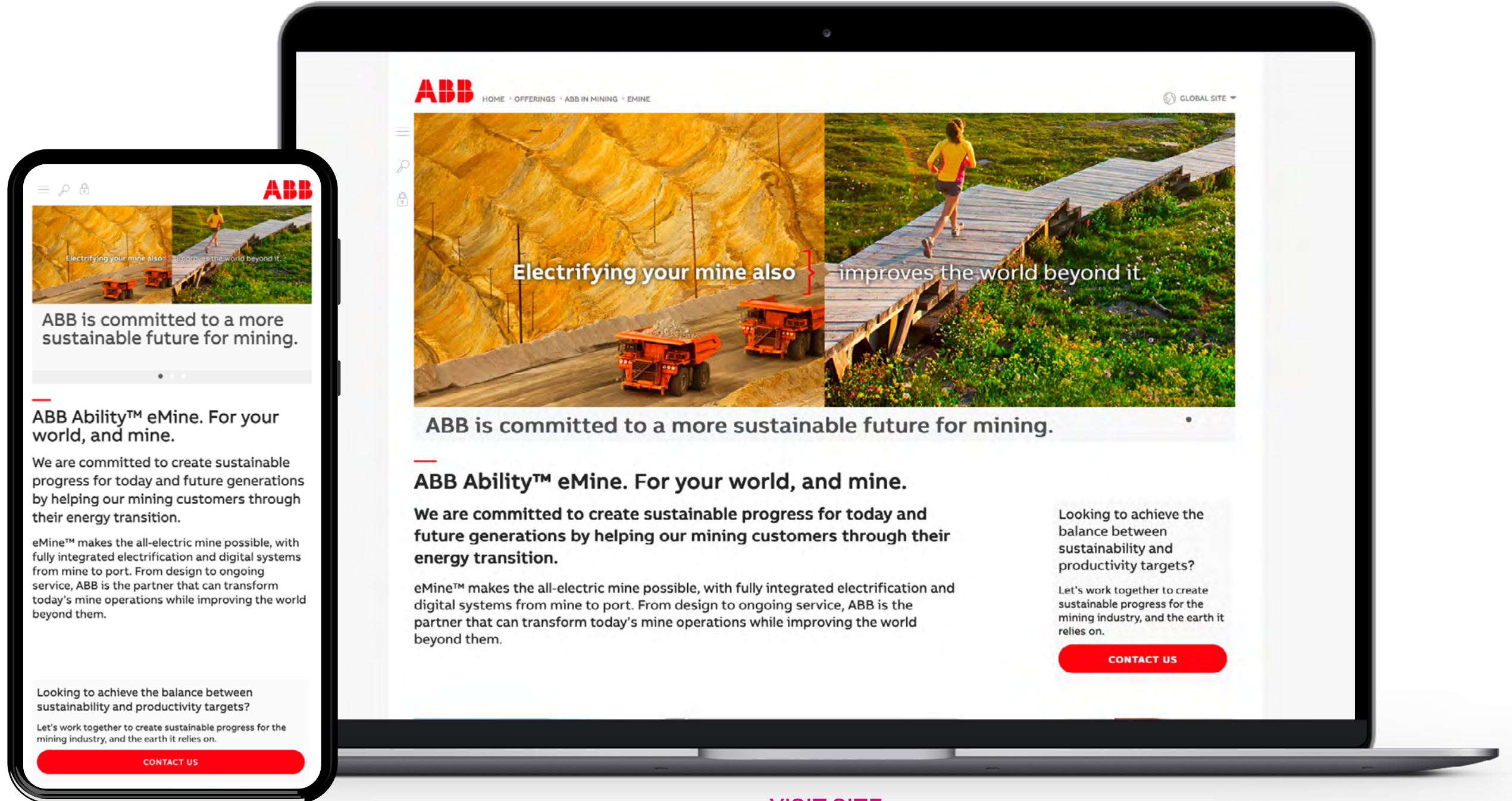
- Power & process control
- Power & energy management
- Electrical asset performance management
- Mine operations management

How can you manage mine cyclical loads efficiently so you can increase productivity while reducing costs and emissions?

We provide a comprehensive energy management system solution, from control to optimization, connected to production demands.

Results: Reduced CAPEX/OPEX and reduce/control CO₂ emissions

ABB's Broad Portfolio Strategic Collaboration Consultancy Services & Mine Design Tailored and Fit-for-Purpose Solutions Lifecycle Services



Electrifying your mine also improves the world beyond it.

ABB is committed to a more sustainable future for mining.

ABB Ability™ eMine. For your world, and mine.

We are committed to create sustainable progress for today and future generations by helping our mining customers through their energy transition.

eMine™ makes the all-electric mine possible, with fully integrated electrification and digital systems from mine to port. From design to ongoing service, ABB is the partner that can transform today's mine operations while improving the world beyond them.

Looking to achieve the balance between sustainability and productivity targets?

Let's work together to create sustainable progress for the mining industry, and the earth it relies on.

CONTACT US



ABB is committed to a more sustainable future for mining.

ABB Ability™ eMine. For your world, and mine.

We are committed to create sustainable progress for today and future generations by helping our mining customers through their energy transition.

eMine™ makes the all-electric mine possible, with fully integrated electrification and digital systems from mine to port. From design to ongoing service, ABB is the partner that can transform today's mine operations while improving the world beyond them.

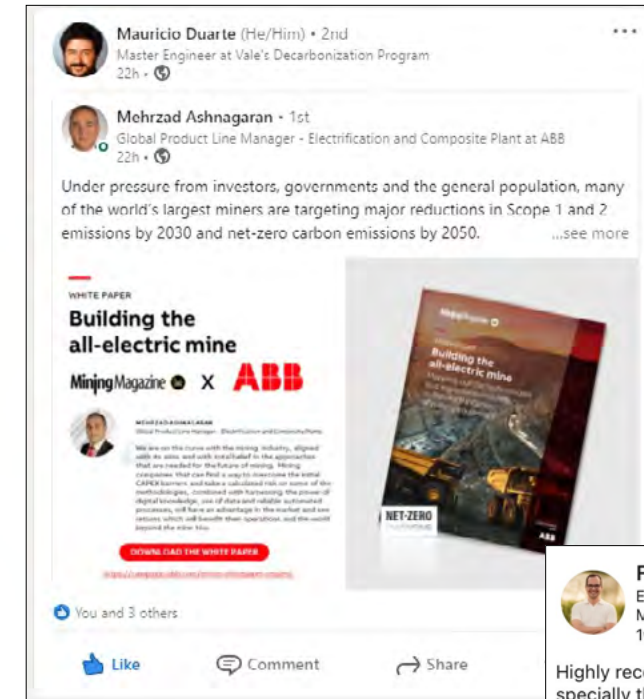
Looking to achieve the balance between sustainability and productivity targets?

Let's work together to create sustainable progress for the mining industry, and the earth it relies on.

CONTACT US

168

DOWNLOADS
WITHOUT PAID PROMOTION
(ORGANIC ONLY)

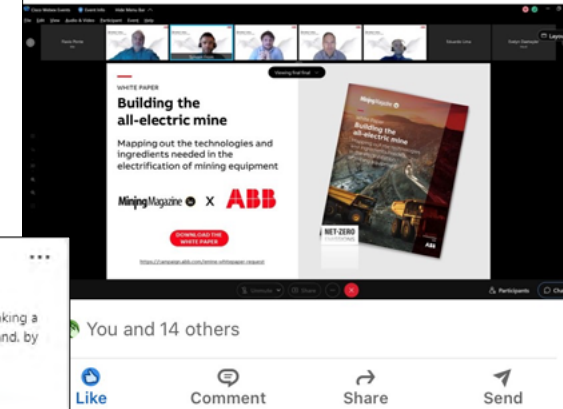
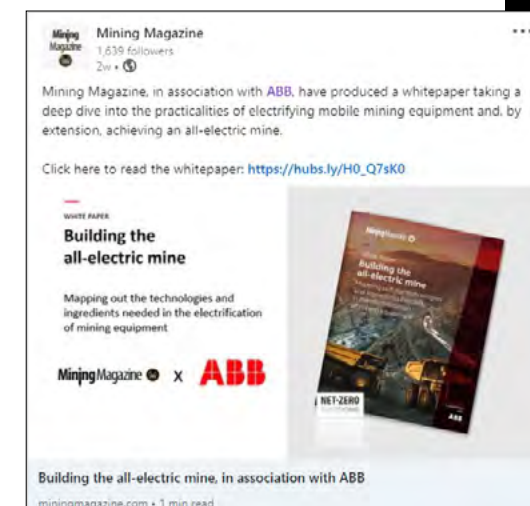


Flavio Ponte, MSc PMP® · 1st
Electrical Engineer | Reliability & Asset Management | Risk Management | Project Management
1w · 🌐

Highly recommend it to the fellow Electrical Engineers, specially the ones working in the Mining Sector!

#electrical
#mining
#technology

LINKEDIN POSTS
FROM CUSTOMERS



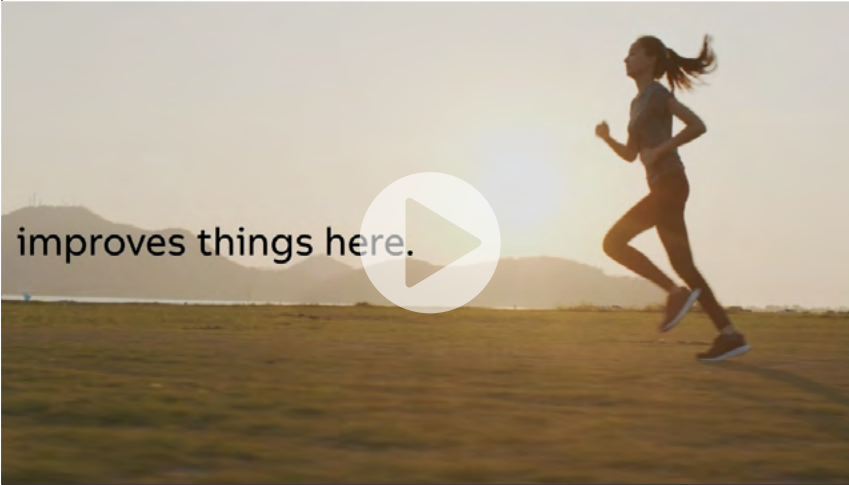
SOCIAL MEDIA POSTS

Teaser

ABB ABB Process Automation
317,772 followers
1mo • 🌐

The mining industry is about to get a breath of fresh air. Stay tuned tomorrow to learn more about ABB's transformative solution.

#miningindustry #allelectricmine



173 • 4,457 views

eMine™ announcement

ABB ABB Process Automation
317,772 followers
1mo • Edited • 🌐

The global mining industry is undergoing one of the most significant and important transformations of our generation – and that is to become zero-carbon. At ABB, we are committed to turn this vision into reality by helping our customers through their energy transition, creating sustainable progress for today and future generations.

<https://bddy.me/3BLHodo>

ABB today launched ABB Ability™ eMine, a purposeful approach, method and integrated portfolio of electrification and digital systems designed to accelerate the decarbonization of the mining sector. ABB also unveiled the piloting of the groundbreaking ABB Ability™ eMine FastCharge, the world's fastest and most powerful charging system, designed to interface with all makes of electric mining haul trucks.

We believe together we can overcome the challenges facing the mining industry, and also improve the world beyond it.

#eMine #ForYourWorldAndMine #miningindustry #allelectricmine #electrification #automation




ABB unveils game-changing ABB Ability™ eMine to fast-track transition to all-electric mines

new.abb.com • 4 min read

150 • 1 comment

eMine™ video post

ABB ABB Process Automation
317,770 followers
1mo • 🌐

If every truck in every mine were electrified, we could remove 198,000 tons of CO2 every day from the air we breathe. ABB Ability™ eMine can help make that happen through our purposeful approach, proven methods and integrated systems.

By fully integrating electrification and digital from the mine to the port, eMine™ significantly reduces environmental impact, raises productivity, and brings fresh air to miners and to society.

Together we can build the mine of tomorrow. A mine that's great for your business. And even better for the world around it.

<https://lnkd.in/d/fjB5T3z>

#eMine #ForYourWorldAndMine #allelectricmine #miningindustry #electrification #automation

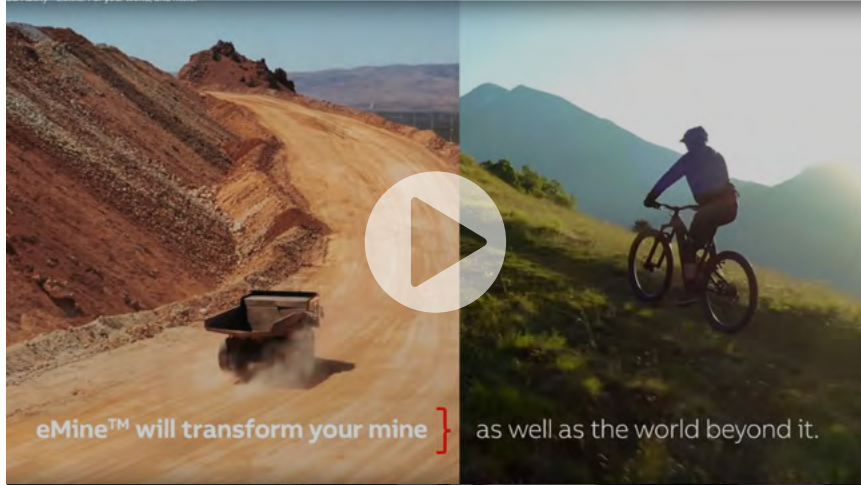


ABB Ability™ eMine. For your world, and mine.

143 • 1 comment • 3,046 views

SOCIAL MEDIA POSTS


eMine™ DYK ocean post

ABB ABB Process Automation
313,538 followers
23h • Edited •

Electrifying a single mining truck can help save the coral reefs by lowering the oceans' CO₂ absorption by up to 1,000 tons a year. Just imagine electrifying your entire mine.
ABB Ability™ eMine makes that goal a reality.
Building on decades of experience and expertise, we fully integrate electrification and digital systems from the mine to the port. Which ultimately lowers your environmental impact and operating costs, while raising your productivity.
From planning to implementation, you can trust ABB to help change the current. For your mine as well as the world around it.

Get started with eMine™ >> <https://lnkd.in/dfjB5T3z>

#eMine #ForYourWorldAndMine #allelectric #allelectricmine #electrification #sustainability #miningindustry #digitalmine #energyefficiency



lowers the oceans CO₂ absorption by up to **1,000 tons** per year?

ABB Ability™ eMine. For your world, and mine.

78 · 1,344 Views


eMine™ DYK tree post

ABB ABB Process Automation
317,772 followers
1w •

Electrifying a single mine truck eliminates the same amount of CO₂ emissions per year that it would take 46,000 trees to absorb. Just imagine if we electrified all 49,500+ of them just in surface mining operations.
ABB Ability™ eMine makes the all-electric mine possible. By fully integrating electrification and digital systems from the mine to the port, eMine™ will lift your environmental responsibility and your productivity at the same time.
ABB has the experience and expertise you can trust to root your mine firmly in sustainability.

The world is ready for the all-electric mine, are you? <https://lnkd.in/dfjB5T3z>

#eMine #mining #sustainability #allelectric #miningindustry



eliminates the amount of CO₂ per year it would take **46,000 trees** to absorb?

It's time for the all-electric mine. Are you ready?

132 · 4 comments · 3,889 views


eMine™ DYK arctic ice post

ABB ABB Process Automation
320,657 followers
1m •

Did you know that every electrified mining truck eliminates enough CO₂ emissions per year to save 3,000 square meters of arctic ice? Imagine the impact of electrifying the entire mine.
ABB Ability™ eMine makes that possible <https://lnkd.in/dfjB5T3z>
Building on decades of experience and expertise, we fully integrate electrification and digital systems from the mine to the port, reducing your environmental impact, lowering your costs and raising your productivity.

Refreshing, isn't it?

#eMine #ForYourWorldAndMine #miningindustry #electrification #mining



eliminates enough CO₂ per year to save **3,000 square meters** of arctic ice?

Let's create sustainable progress. For your world, and mine.

Like Comment Share Send

1 view of your video

Add a comment...

SOCIAL MEDIA POSTS

eMine™ white paper post



ABB ABB Process Automation
328,323 followers
2w • Edited • 🌐

Many of the world's largest miners are targeting major reductions in Scope 1 and 2 emissions by 2030 and net-zero carbon emissions by 2050. To reach these targets, mining companies will need to make substantial investments in the key enablers of decarbonization – namely electrification of equipment and transitioning to the use of renewables for electricity generation.

In this white paper, [Mining Magazine](#), in association with ABB, take a deep dive into the practicalities of electrifying mobile mining equipment and, by extension, achieving an all-electric mine.

Download the white paper >> <https://bddy.me/2Zmzmdw>

[#allelectricmine](#) [#eMine](#) [#MiningIndustry](#) [#decarbonization](#) [#netzeroemissions](#) [#ABBProcessIndustries](#)



Download the White Paper: Building the all-electric mine | ABB x Mining Magazine
new.abb.com • 1 min read

eMine™ brochure post

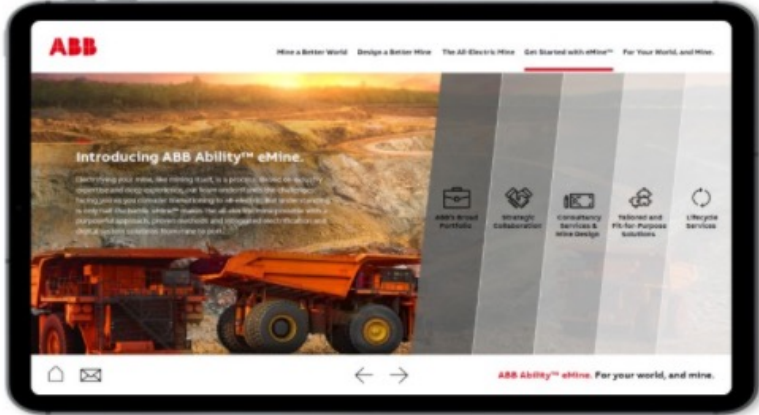
ABB ABB Process Automation
328,324 followers
6h • 🌐

Transitioning to an all-electric mine is not a simple task. It is going to take new thinking. New plans and designs. New training for your workers. And a whole new outlook on your operation.

ABB not only understands these requirements, we can also equip you to meet them with ABB Ability™ eMine.

Get your copy of the interactive brochure and see how eMine™ can electrify your mine while improving the world beyond it:
<https://bddy.me/3pIAIxE>

[#eMine](#) [#ForYourWorldAndMine](#) [#allelectricmine](#) [#miningindustry](#) [#automation](#) [#digitalmine](#) [#decarbonization](#) [#sustainability](#)



Get started with eMine™ | Download the interactive brochure
new.abb.com • 1 min read

215 ARTICLES

TOTAL NUMBER OF COVERAGE
PIECES RECORDED

65,016,511

TOTAL POTENTIAL
AUDIENCE REACH

15,944

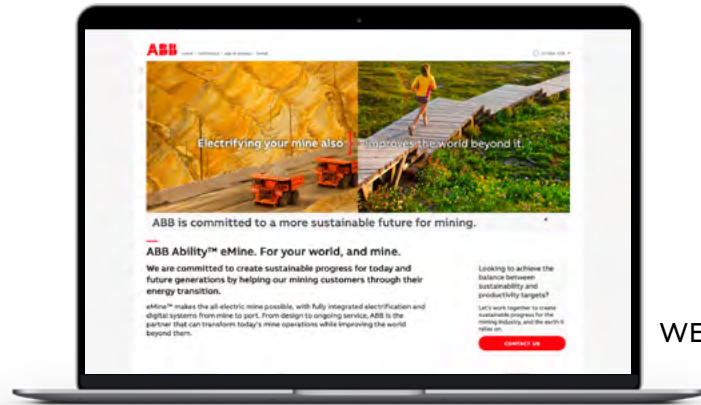
TOTAL EMINE PAGE
VIEWS ON ABB.COM

232

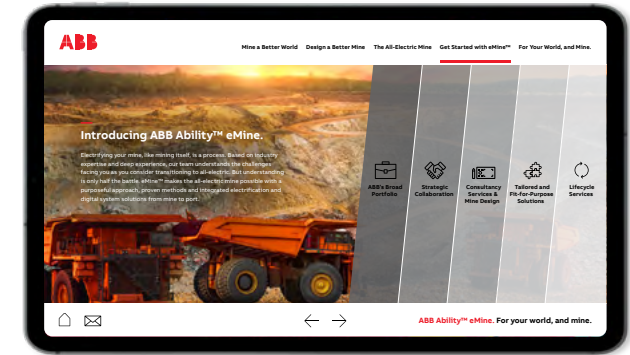
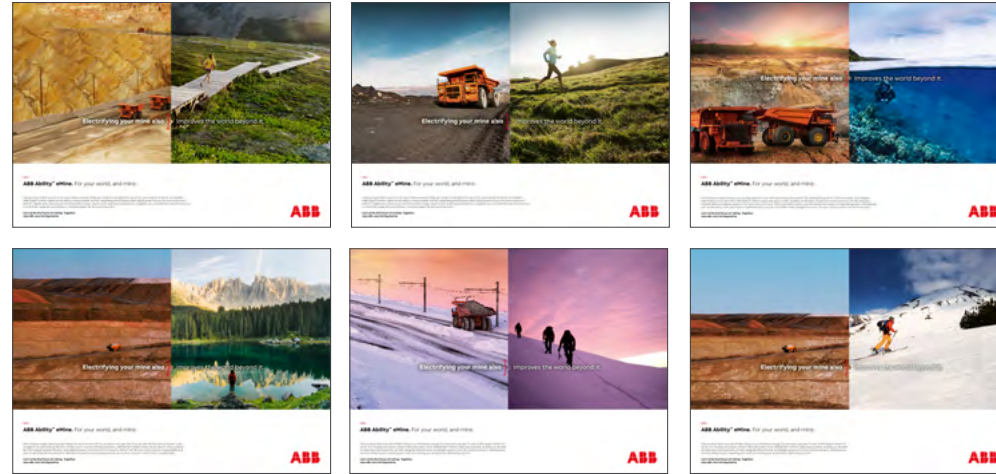
TOTAL NUMBER OF
DOWNLOADS OF THE WHITE
PAPER AND BROCHURE

147 PARTICIPANTS + **5** HOT LEADS

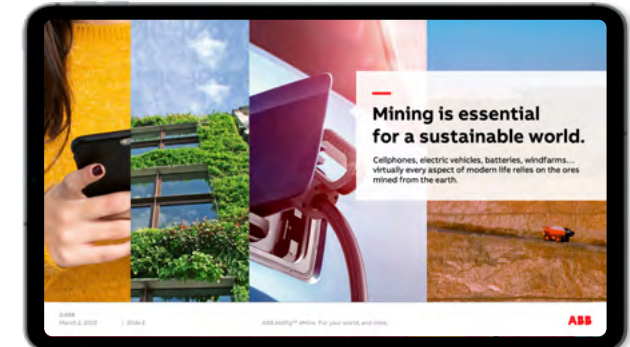
ABB MINING TECH TALKS



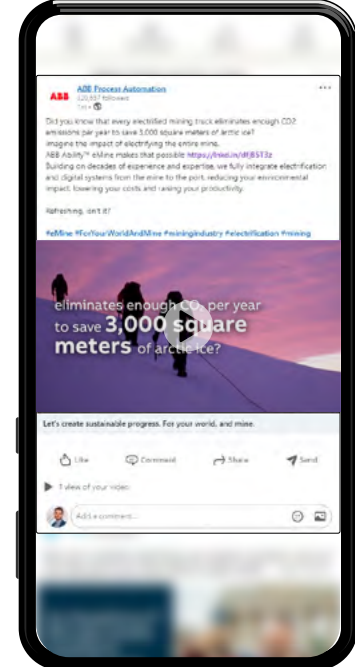
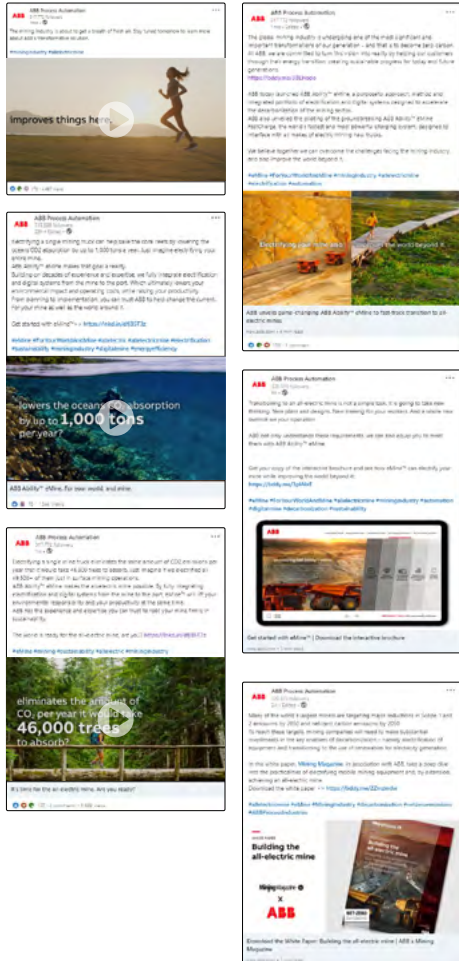
PRINT ADVERTISING



INTERACTIVE BROCHURE

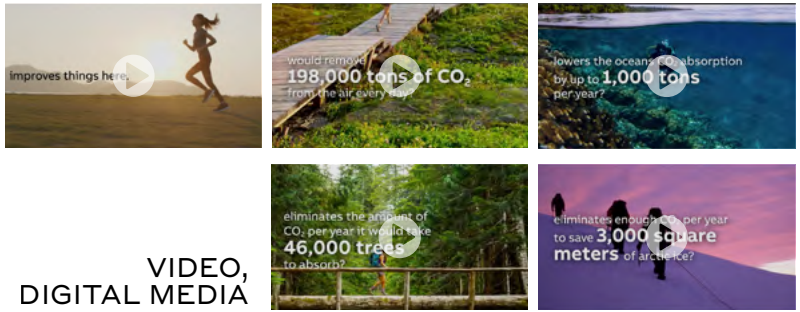
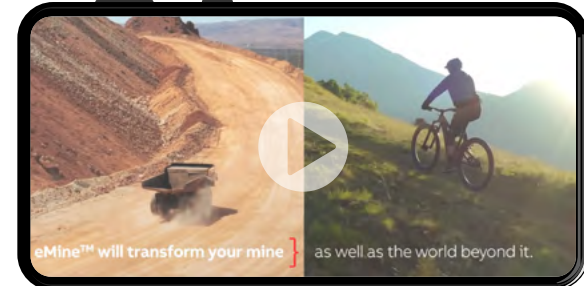


INTERACTIVE PRESENTATION

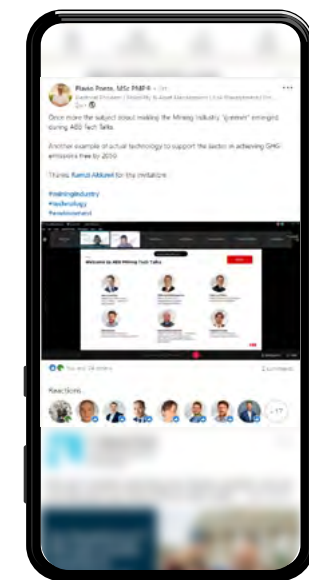


SOCIAL MEDIA POSTS

ABB Ability™ eMine. For your world, and mine.



VIDEO, DIGITAL MEDIA



WEBINAR ON DEMAND

WHITE PAPER

